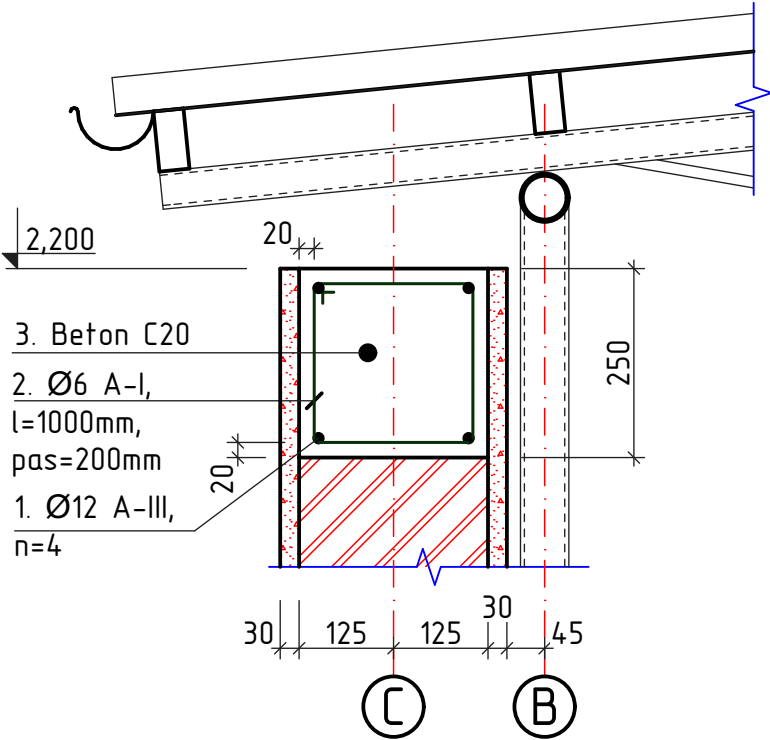
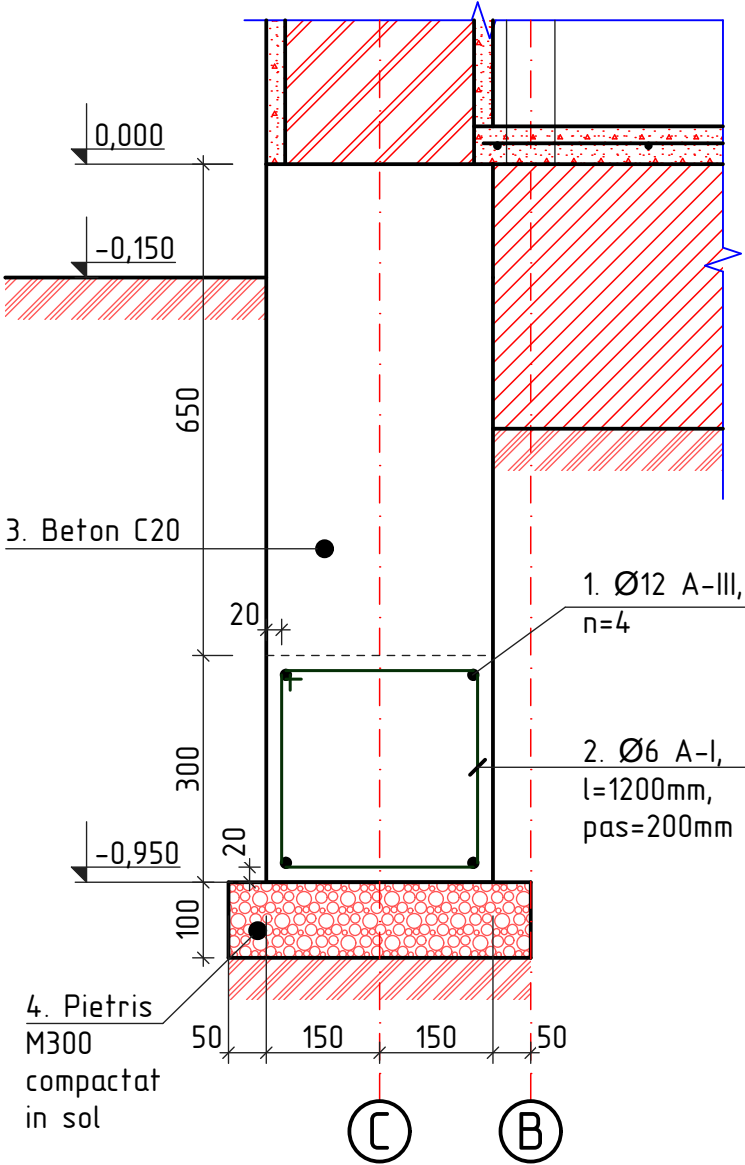


Briu B-1  
sc.1:10



Fundatie F-1  
sc.1:10



Specificatia materialelor

Poz.	Denumirea	Buc.	Masa un. kg	Nota
	Fundatie F-1	12		
1	Ø12A-III, GOST 5781-82, Σl=26,8m	-	0,888	23,8kg
2	Ø6A-I, GOST 5781-82, l=1200mm	33	0,27	8,91kg
3	Beton cl. C20	-	-	1,9m³
4	Pietris M300	-	-	0,3m³
	Briu B-1	12		
1	Ø12A-III, GOST 5781-82, Σl=26,8m	-	0,888	23,8kg
2	Ø6A-I, GOST 5781-82, l=1000mm	33	0,222	7,33kg
3	Beton cl. C20	-	-	0,42m³

1. Plansa data se citeste cu pl.-3

						OBIECTIV NR. - 19.03-D/21-2-SAC			
						Amenajarea teritoriului prin pavarea si dispunerea curtii interioare a institutiei timpurii nr.3 din str. Bulgara 98, mun. Balti			
Mod.	Can.	Foaia	Nr.d.	Semnat.	Data	Foisor pentru copii existent	faza	plansa	planse
ASP		Mihaila V.			06.21		PE	4	
ISP		Hihlat E.			06.21				
Elaborat		Ciobanu V.			06.21	Briu B-1; Fundatie F-1; Specificatia materialelor	SRL "Geo-Cad-Proiect" mun. Balti		